

TECHNICAL CHARACTERISTICS OF THE CERAMIC DISCS:

Material:	Al ₂ O ₃
Surface roughness Ra:	0.2 µm
Contact surface area:	50-80%

TECHNICAL CHARACTERISTICS OF THE CARTRIDGE:

Opening angle:	25°
Mixing angle:	110°
Max. temperature:	90°C / 194°F

Recommended tightening torque:

12-13 Nm / 106-115 lbf·in

Pressure test: pneumatic	6 bar / 87 psi
hydraulic	35 bar / 500 psi

Flow rate:

(3 bar / 45 psi, test faucet, EN 817)

22.1 l/min / 5.8 gpm with resistance "C"

33.5 l/min / 8.8 gpm without resistance

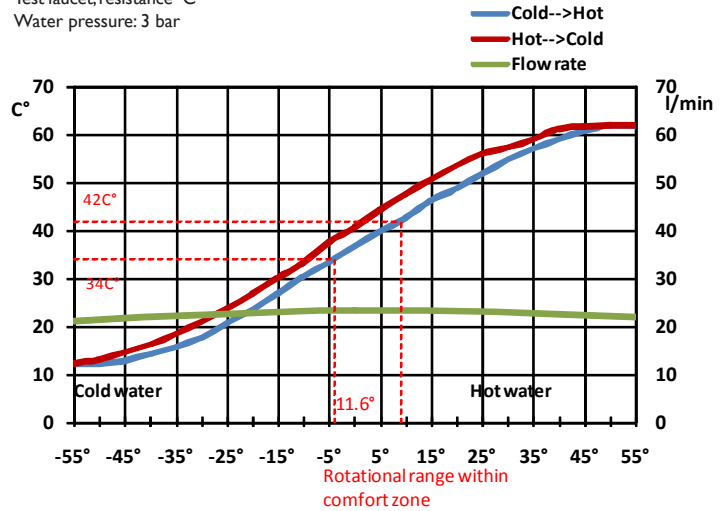
Endurance test:

EN 817 70 000 cycles

ASME A112.18.1M 500 000 cycles

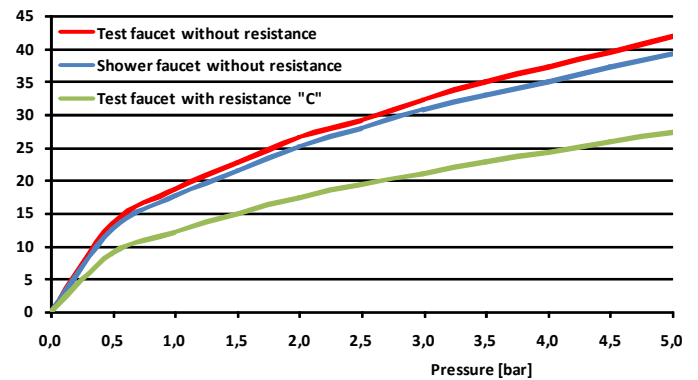
FLOW RATE & HYSTERESIS CURVES

Test faucet, resistance "C"
Water pressure: 3 bar



FLOW RATE CURVES

Flow rate [l/min]



K-40

CARTRIDGES

A • B

K-42

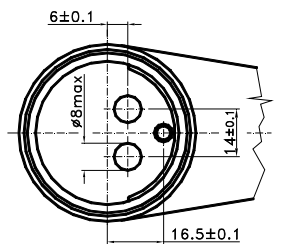
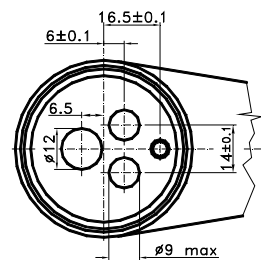
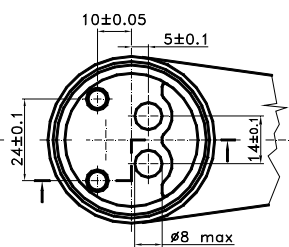
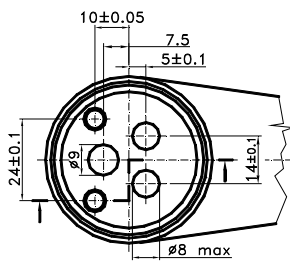
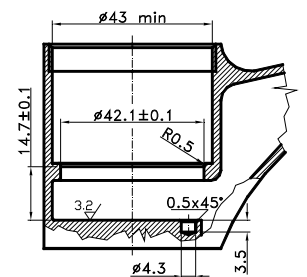
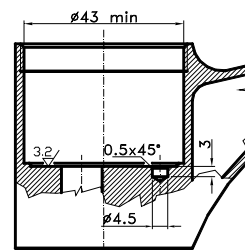
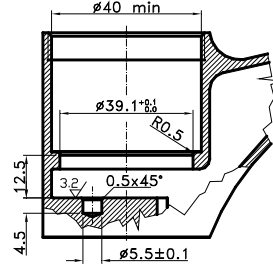
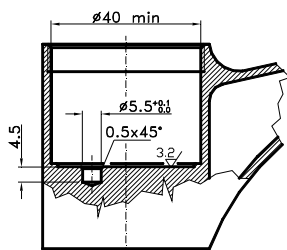
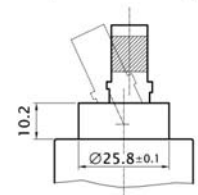
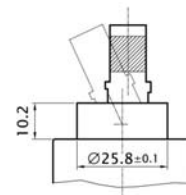
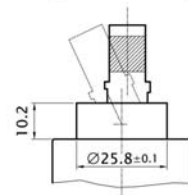
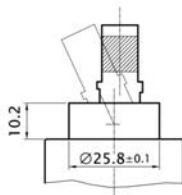
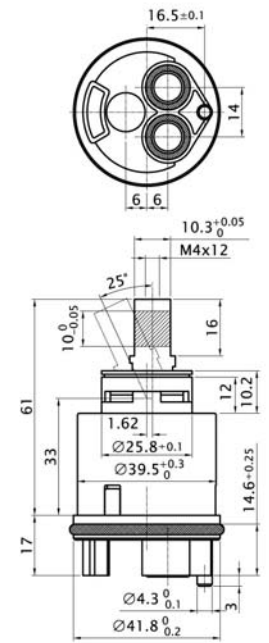
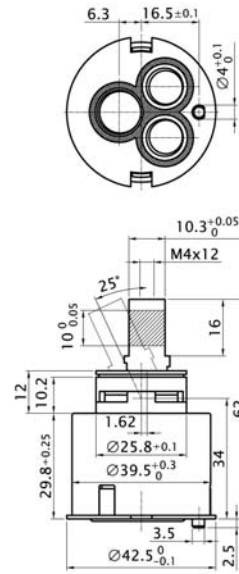
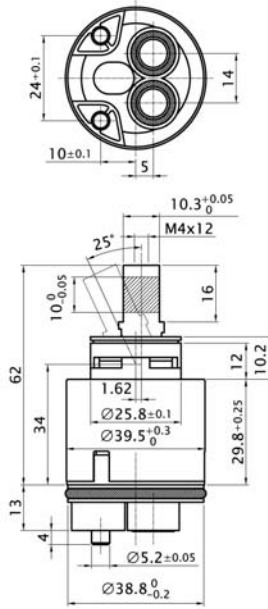
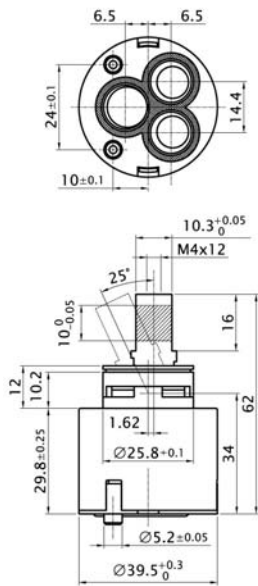
CARTRIDGES

C • D

Cartridges with
hot limit ring &
volume limit screw

Cartridges without
hot limit ring &
volume limit screw

Bodies



K-40 A

K-40 B

K-42 C

K-42 D